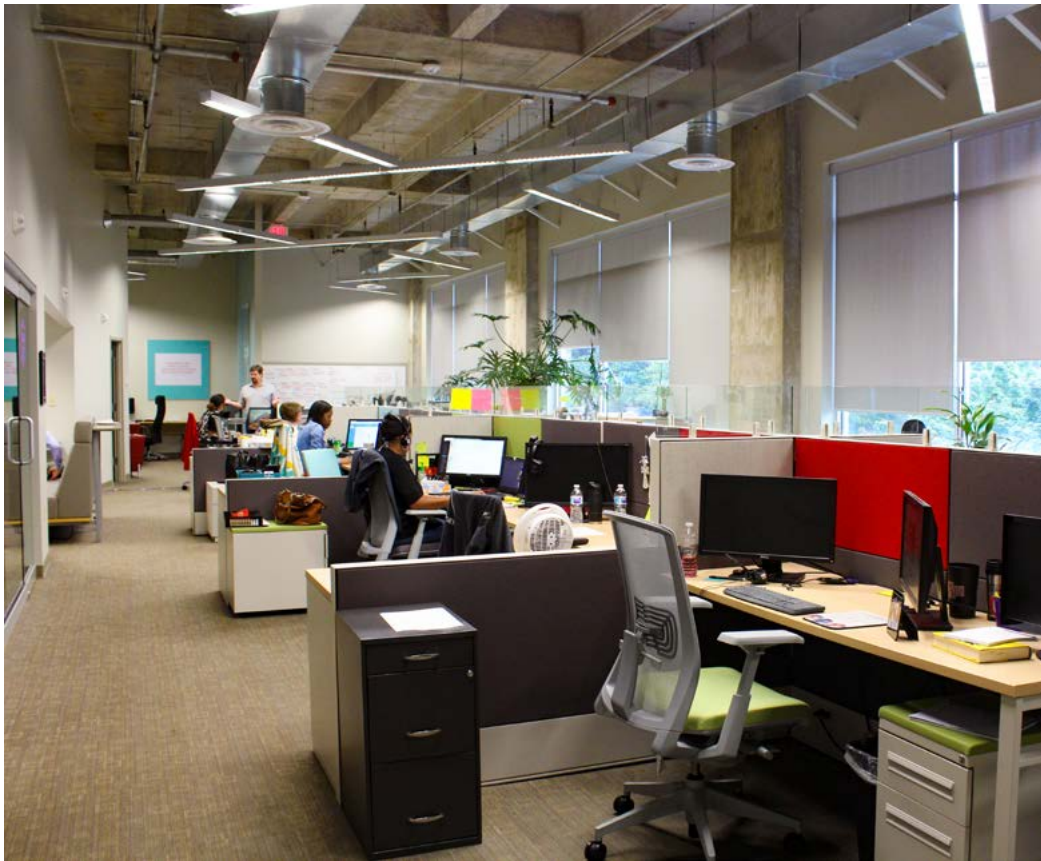


# 200 West Side Square - HUNTSVILLE, AL

## SPACE FOR SUBLEASE ON DOWNTOWN SQUARE

Sublease term through 11/30/2020.



### PROPERTY HIGHLIGHTS

- Sublease term through 11/30/2020.
- Suite 205 features open/collaborative office space, private office suites, kitchen area, reception area, and conference rooms.
- Both suites have stunning views of downtown Huntsville.
- 200 West Side Square has a Walkability Index Score of 76 (Very Walkable).
- The suites previously housed Spur, one of the city's leading staffing/tech companies.
- Property is adjacent to beautiful Big Spring Park, the city's largest urban park featuring plenty of green space and walking trails, and multiple restaurants and retail options.

### ABOUT THE PROPERTY

200 West Side Square is located in the heart of the city on the historic Downtown Square. As part of the city's main business district, the building is located in close proximity to a city parking deck, high-end retailers, thriving restaurants, and businesses.

### LOCATION

200 West Side Square  
Huntsville, AL 35801

### SPACE AVAILABLE

Suite 205 - 3,666 SF  
Suite 446 - 1,986 SF

### PRICE

Suite 205 - \$26.11 PSF, Full-Service  
Suite 446 - \$17.98 PSF, Full-Service

### FOR MORE INFORMATION CALL

Eric St. John  
256-536-8809



**CRUNKLETON**  
COMMERCIAL REAL ESTATE GROUP

## PROPERTY FEATURES



CLOSE TO HIGH-END RETAIL



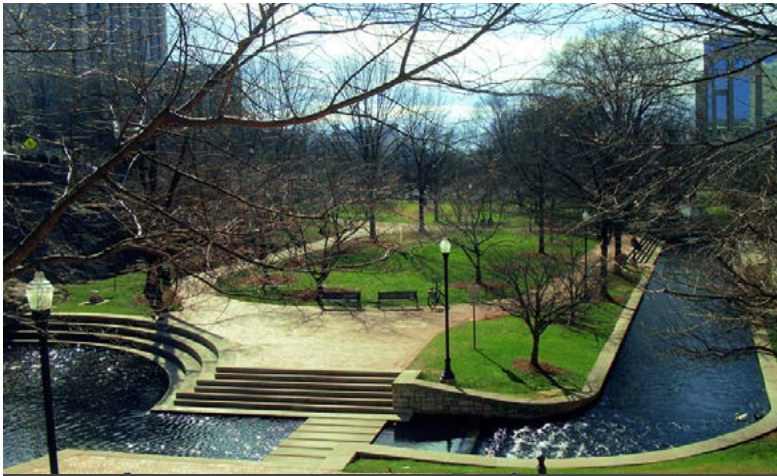
HAPPY HOUR AROUND THE CORNER



MULTIPLE INTERNET & FIBER OPTIONS



TAKE YOUR LUNCH OUTSIDE



ENJOY THIS STUNNING OFFICE VIEW



ROOM FOR YOUR BUSINESS TO GROW

## WELCOME TO DOWNTOWN HUNTSVILLE - REDEFINING THE CITY CENTER



LUXURY LOFT LIVING



CULTURAL EPICENTER



VIBRANT NIGHTLIFE



THRIVING COMMUNITY

### DOWNTOWN HUNTSVILLE REVITALIZATION

Downtown Huntsville Inc. is committed to creating a vibrant, diverse and economically sustainable Downtown Huntsville. The organization focuses on cultivating the urban and economic environment by:

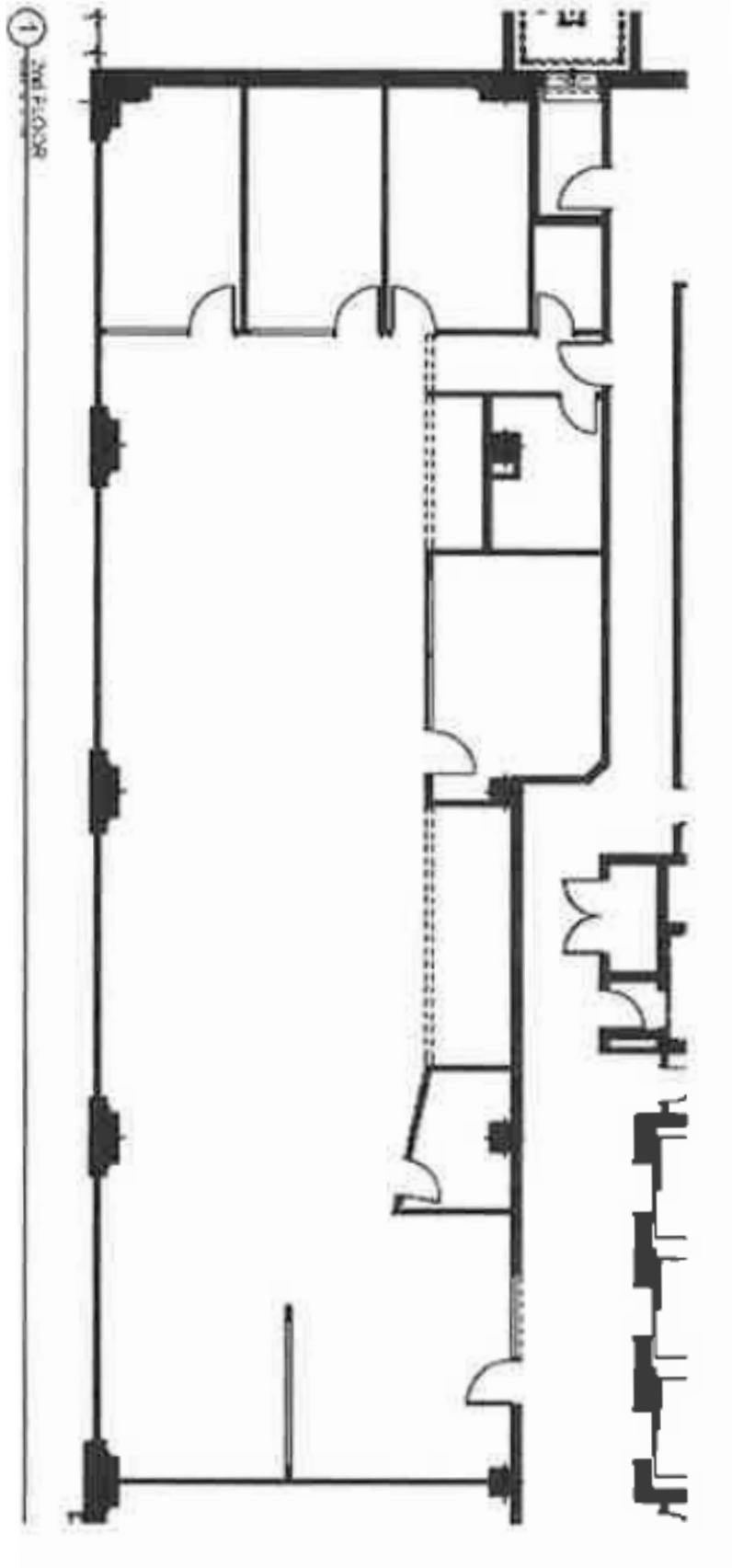
- Helping to master plan with the city to encourage a high-quality live, work, play community, focused on opportunity sites, redevelopment projects, and the development of commercial and retail businesses.
- Marketing & Public Relations
- Advocacy & Public Policy - State and local issues
- Philanthropy & Membership

Find out more at: [www.DowntownHuntsville.org](http://www.DowntownHuntsville.org)

### CURRENT DEVELOPMENTS IN DOWNTOWN

- **STOVEHOUSE** - Stovehouse is Huntsville's largest, carefully curated work, play, eat, drink and events complex. The development will house concert halls, collaborative workspaces, boutique shopping, restaurants, cafés, and more.
- **City Centre** - A mixed use development underway that includes a 235 room hotel, 10,000 SF of commercial space, 270 multi-family units and a 50,000 SF of retail shopping center
- **The Avenue** - The Avenue is an upscale, mixed-use development in downtown Huntsville featuring 20,000 square feet of street-level retail space in addition to 200 loft style apartments and a on-site parking garage.

3,666 SF



WEST SIDE SQ.

1,986 SF

