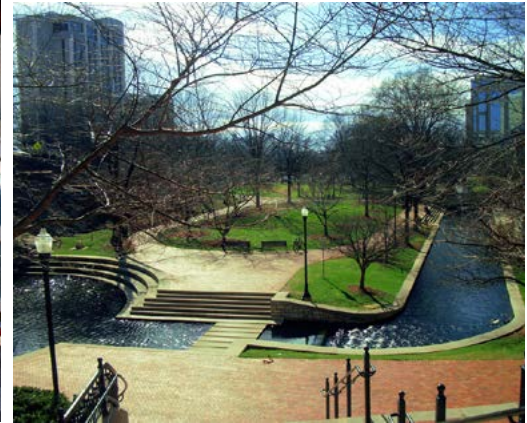


200 West Side Square - HUNTSVILLE, AL

SPACE FOR LEASE ON DOWNTOWN SQUARE



PROPERTY HIGHLIGHTS

- 200 West Side Square has a Walkability Index Score of 76 (Very Walkable).
- Near major downtown retailers: Harrison Brothers Hardware, U.G. White, Roosevelt & Co. Gentleman's Supply, Honest Coffee Roasters, and The Avenue.
- Property is adjacent to beautiful Big Spring Park, the city's largest urban park featuring plenty of green space and walking trails.
- Connected to Keegan's Irish Pub, one of Downtown Huntsville's newest restaurants.

DEMOGRAPHICS

The Downtown Huntsville area has an average daytime business population of over 34,000 people and an average household income of over \$90,000 within a .75 mile radius of the site, millennials making up the overwhelming majority of that population.

ABOUT THE PROPERTY

200 West Side Square is located in the heart of the city on the historic Downtown Square. As part of the city's main business district, the building is located in close proximity to a city parking deck, high-end retailers, thriving restaurants, and businesses.

LOCATION

200 West Side Square
Huntsville, AL 35801

SPACE AVAILABLE

Lobby Level - Approx. 2,300 SF

Spring Street Level:

Suite 1 - 3,090 SF; Suite 2 - 820 SF

PRICE

Please call for pricing information.

FOR MORE INFORMATION CALL

Anusha Alapati
256-536-8809



CRUNKLETON
COMMERCIAL REAL ESTATE GROUP

PROPERTY FEATURES



CLOSE TO HIGH-END RETAIL



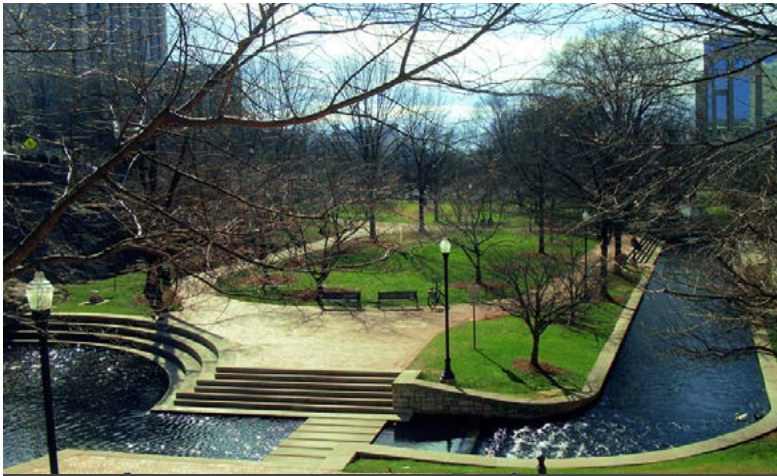
HAPPY HOUR AROUND THE CORNER



MULTIPLE INTERNET & FIBER OPTIONS



TAKE YOUR LUNCH OUTSIDE



ENJOY THIS STUNNING OFFICE VIEW



ROOM FOR YOUR BUSINESS TO GROW

WELCOME TO DOWNTOWN HUNTSVILLE - REDEFINING THE CITY CENTER



LUXURY LOFT LIVING



CULTURAL EPICENTER



VIBRANT NIGHTLIFE



THRIVING COMMUNITY

DOWNTOWN HUNTSVILLE REVITALIZATION

Downtown Huntsville Inc. is committed to creating a vibrant, diverse and economically sustainable Downtown Huntsville. The organization focuses on cultivating the urban and economic environment by:

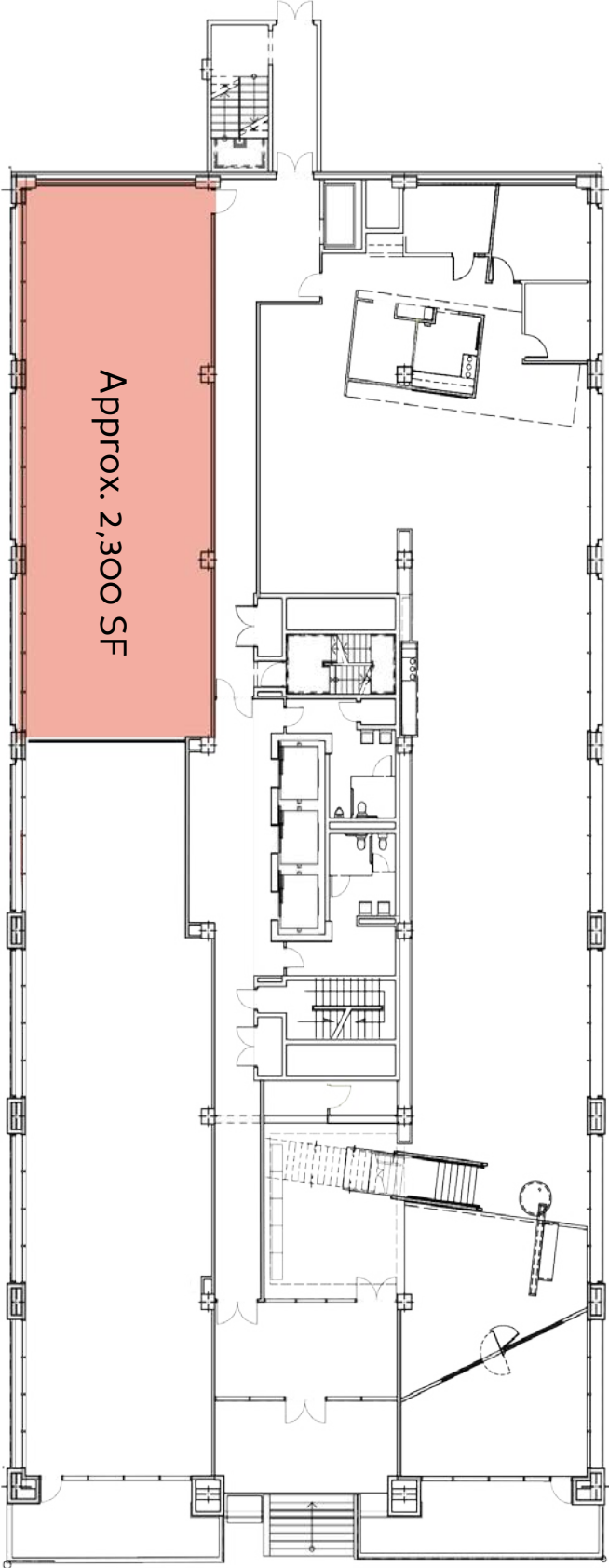
- Helping to master plan with the city to encourage a high-quality live, work, play community, focused on opportunity sites, redevelopment projects, and the development of commercial and retail businesses.
- Marketing & Public Relations
- Advocacy & Public Policy - State and local issues
- Philanthropy & Membership

Find out more at: www.DowntownHuntsville.org

CURRENT DEVELOPMENTS IN DOWNTOWN

- **STOVEHOUSE** - Stovehouse is Huntsville's largest, carefully curated work, play, eat, drink and events complex. The development will house concert halls, collaborative workspaces, boutique shopping, restaurants, cafés, and more.
- **City Centre** - A mixed use development underway that includes a 235 room hotel, 10,000 SF of commercial space, 270 multi-family units and a 50,000 SF of retail shopping center
- **The Avenue** - The Avenue is an upscale, mixed-use development in downtown Huntsville featuring 20,000 square feet of street-level retail space in addition to 200 loft style apartments and a on-site parking garage.

LOBBY LEVEL - FLOOR PLAN



WEST SIDE SQ.

SPRING STREET LEVEL - FLOOR PLAN

SPRING STREET

