

# Whitesburg Center - HUNTSVILLE, AL

RETAIL SPACE FOR LEASE



## PROPERTY HIGHLIGHTS

- Conveniently located in one of Huntsville's most established retail corridors with easy access to Highway 231.
- Ample parking available for customers and tenants.
- Located across the street from Fresh Market-anchored retail development and Publix-anchored development.
- Co-tenants include: Cheeburger Cheeburger, Dollar Tree, Mattress Firm, Papa Murphy's, Baskin Robbins, and more.

## DEMOGRAPHICS

	1 Mile	3 Mile	5 Mile
Population	6,399	44,781	101,226
Households	2,937	20,373	44,661
Avg Household Income	\$92,448	\$75,923	\$69,744
Avg Vehicles Per Day	31,500 ± On Airport Rd.		

## ABOUT THE PROPERTY

Whitesburg Center is situated in the heart of one of Huntsville's main retail corridors and in SE Huntsville's mid-high income population. With plenty of parking and easy access to major roads, this property is extremely visible from both heavily trafficked Whitesburg Drive and Airport Road.

## LOCATION

5000 Whitesburg Drive  
Huntsville, AL 35802  
34.690175, -86.5694704

## SPACE AVAILABLE

16,617 SF Of Retail Space

## PRICE

Please Call For Pricing Information

## FOR MORE INFORMATION CALL

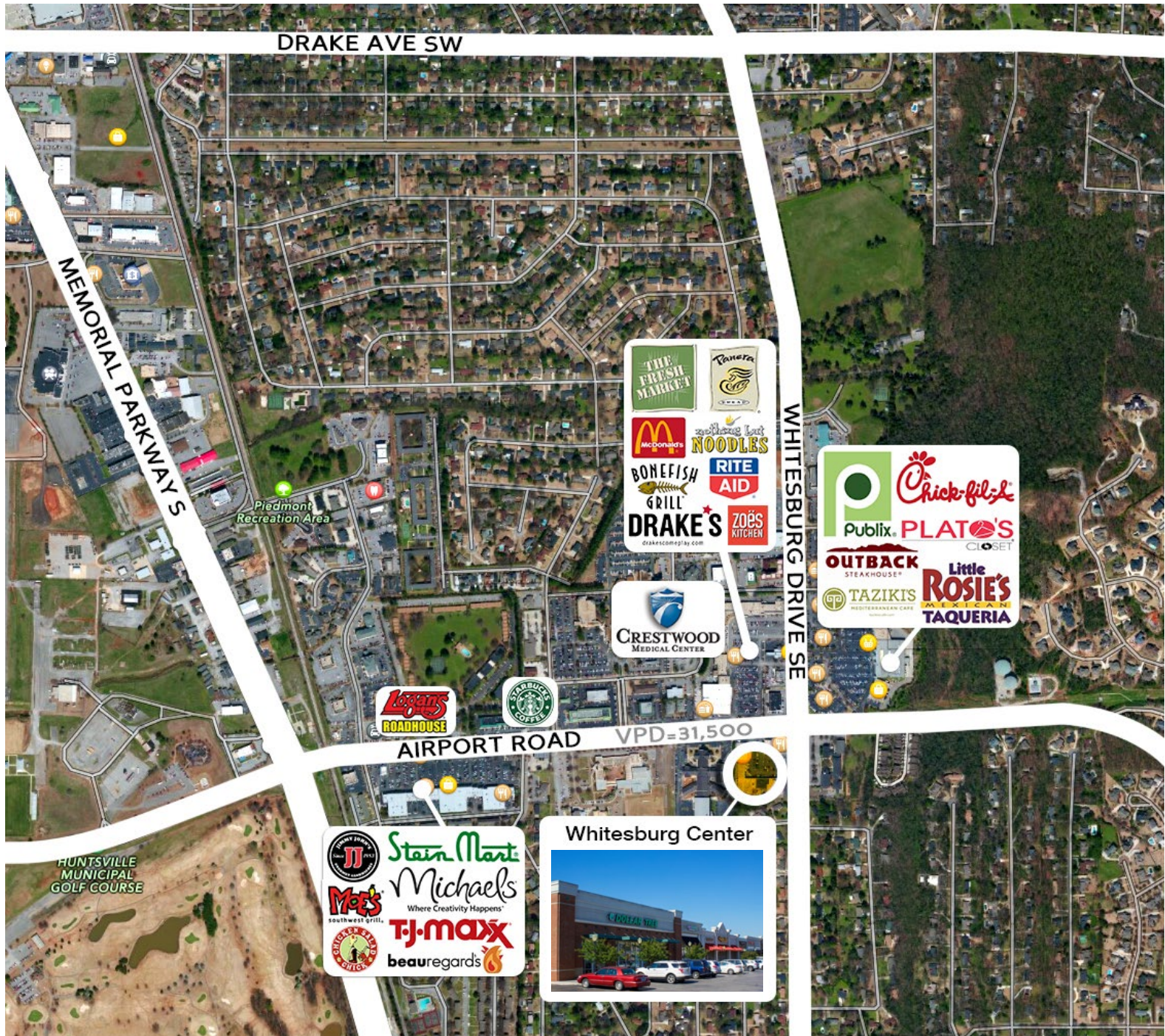
Zac Buckley  
256-536-8809



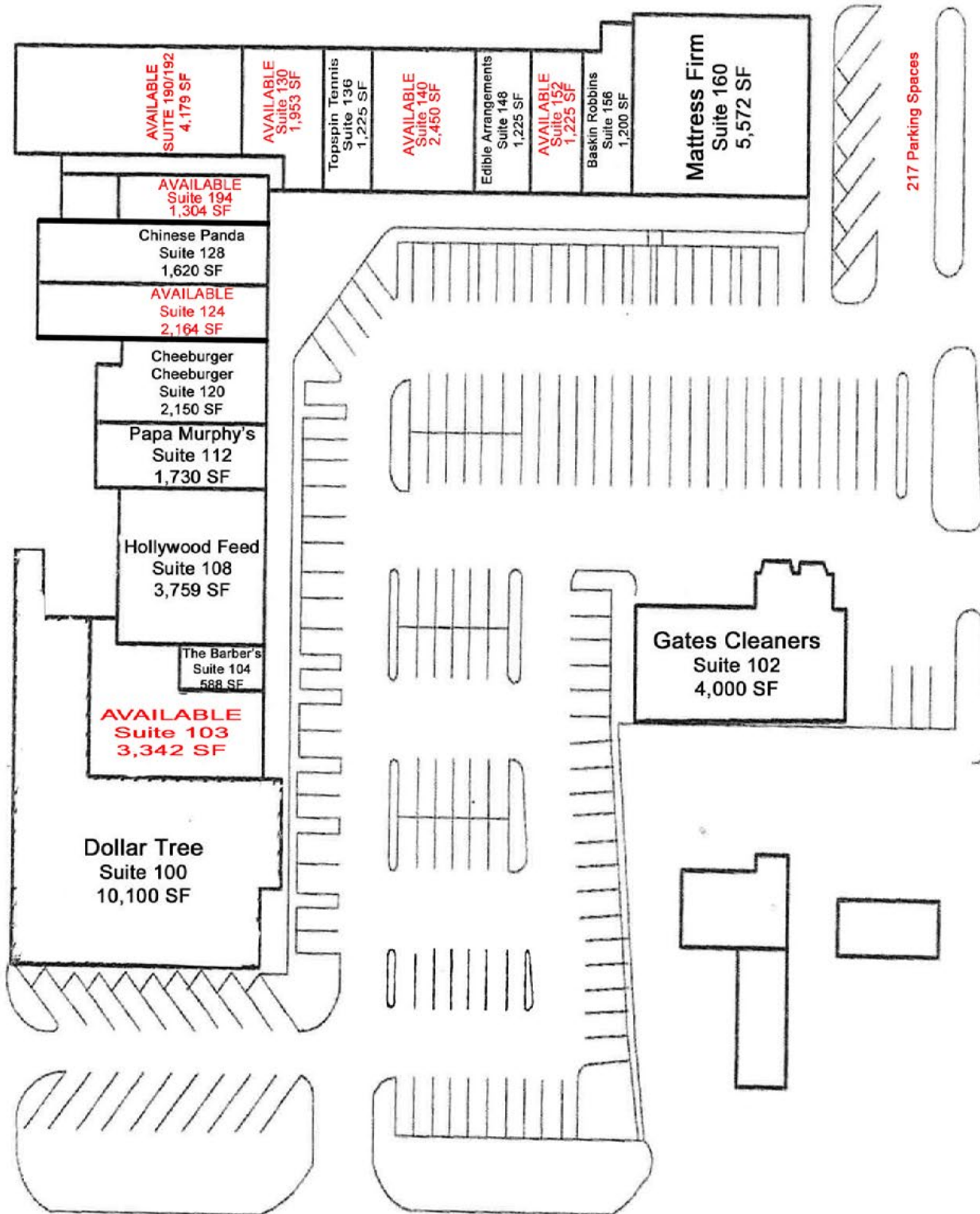
**CRUNKLETON**  
COMMERCIAL REAL ESTATE GROUP



PROPERTY RETAIL MAP







AVAILABLE  
SUITE 190/192  
4,179 SF

AVAILABLE  
Suite 130  
1,953 SF

Topspin Tennis  
Suite 136  
1,225 SF

AVAILABLE  
Suite 140  
2,450 SF

Edible Arrangements  
Suite 148  
1,225 SF

AVAILABLE  
Suite 152  
1,225 SF

Baskin Robbins  
Suite 156  
1,200 SF

Mattress Firm  
Suite 160  
5,572 SF

217 Parking Spaces

AVAILABLE  
Suite 194  
1,304 SF

Chinese Panda  
Suite 128  
1,620 SF

AVAILABLE  
Suite 124  
2,164 SF

Cheeburger  
Suite 120  
2,150 SF

Papa Murphy's  
Suite 112  
1,730 SF

Hollywood Feed  
Suite 108  
3,759 SF

The Barber's  
Suite 104  
588 SF

AVAILABLE  
Suite 103  
3,342 SF

Dollar Tree  
Suite 100  
10,100 SF

Gates Cleaners  
Suite 102  
4,000 SF

WHITESBURG DRIVE

AIRPORT ROAD